

## Platform

0.76 m x 1.83 m low mount platform

Multiple function operation

Full proportional drive joystick control with integral thumb steer switch

Full proportional main boom and swing joystick control

Variable speed dial control for lower boom, telescope and platform rotate

Selectable creep speed on drive / lift and swing functions

1.24 m articulating jib

180 degree powered platform rotator

Platform console machine status light panel <sup>1</sup>

Load sensing system

AC power cable to platform

## Power & Transmission

Deutz 2011L03 (36.4 kW) diesel engine

Engine distress warning /shut down system <sup>2</sup>

Gull-wing turntable hoods

Swing-out engine tray

Spark arresting type muffler

Control ADE™ (Advanced Design Electronics) System

Hydrostatic drive transmission

Four wheel drive

Horn

## Functional Equipment & Accessories

4 degree tilt alarm and indicator light

12 x 16.5 Rim protector foam filled lug tread tyres

Oscillating front axle

Lifting/tie down lugs

Ground control selector switch with key lock

Hour meter

Platform tool tray

12V-DC auxiliary power

## Available Options

0.76 m x 1.22 m low mount platform

0.76 m x 1.52 m low mount platform

Side entry with inward swing gate

13 mm air line to platform

12 x 16.5 foam filled non marking tyres

33/1550 x 16.5 superwide foam filled tyres

On-board 2500W generator

SkyPower™ package 7,500 watt on-board generator

SkyWelder™ package 250 amp welder in the platform <sup>3</sup>

Nite-Bright® package platform mounted lights <sup>4</sup>

<sup>1</sup> Provides indicator lights at platform control console for system distress, low fuel, tilt light, and foot switch status.

<sup>2</sup> Low oil pressure and high coolant temperature alarms with shut-down enabled/disabled by analyser.

<sup>3</sup> Available when integrated with the SkyPower™ package

<sup>4</sup> Consists of six 40-watt lights, four turntable mounted lights and two platform mounted lights.

<sup>5</sup> Includes all-motion alarm and flashing amber beacon.

<sup>6</sup> Includes platform mounted work lights and head & tail lights.

<sup>7</sup> Includes console cover, boom wipers and cylinder bellows.

## Available Options

All motion alarm

Alarm package <sup>5</sup>

Light package <sup>6</sup>

Head and tail lights

Flashing amber beacon

Plugs & Sockets

Hostile environment package <sup>7</sup>

Catalytic purifier muffler

Soft Touch proximity system

Corner storage tray



**JLG Industries Inc.**  
 Polaris Avenue 63  
 2132 JH Hoofddorp  
 The Netherlands  
 Tel: +31 (0)23 565 5665  
 Fax: +31 (0)23 557 2493  
 e-mail address: europe@jlg.com  
**www.jlgeurope.com**  
 An Oshkosh Corporation Company

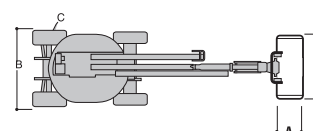
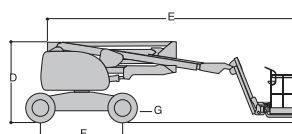
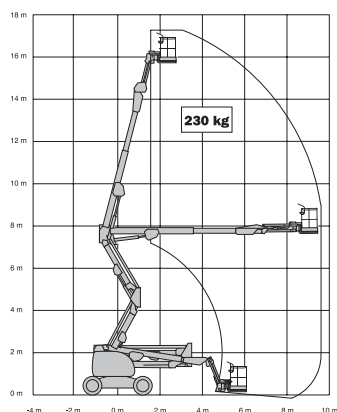
Printed in Belgium  
 FORM No.: DS041  
 PART NO.: DS041-ENGLISH



	510AJ
Platform height	15.81 m
Horizontal outreach	9.48 m
Up and over height	7.67 m
Swing (non continuous)	360°
Platform capacity – unrestricted	230 kg
Platform rotator (hydraulic)	180°
Jib – overall length	1.24 m
Jib - range of articulation	145° (+78°/ -67°)
A. Platform size	0.76 m x 1.83 m
B. Overall width	2.26 m
C. Tailswing (working condition)	Zero
D. Stowed height	2.26 m
E. Stowed length	7.68 m
F. Wheelbase	2.34 m
G. Ground clearance	0.36 m
Machine weight <sup>1</sup>	7,650 kg
Maximum ground bearing pressure	5.7 kg/cm <sup>2</sup>
Drive speed 2WD	—
Drive speed 4WD	7.2 km/h
Gradeability 2WD	—
Gradeability 4WD	45%
Tyres (foam filled)	12 x 16.5
Axle oscillation <sup>2</sup>	0.20 m
Turning radius – inside	2.00 m
Turning radius – outside	5.00 m
Diesel engine Deutz 2011L03	36.4 kW
Fuel tank capacity	62.5 L
Hydraulic system	130 L
Auxiliary power	12V DC

<sup>1</sup> Certain options or country standards may increase weight and/or dimensions.

<sup>2</sup> Optional on models 450A and 450AJ.



©2008, JLG Industries, Inc.

JLG is continually researching and developing products and reserves the right to make modifications without prior notice. All data in this document is indicative. Certain options or country standards will increase weight. Specifications may change to meet country standards or with the addition of optional equipment.

